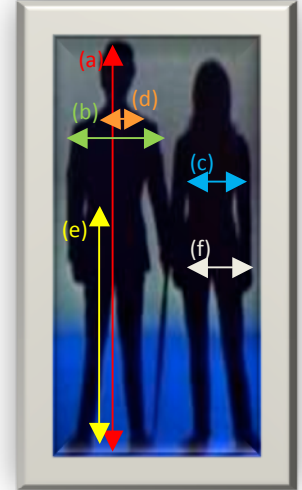


Robe Measurements

Class of 2015/2016

El-Shaddai bible College & Sonship School required measurements are detailed to assist you in obtaining accurate measurements.

- Height:* Record total height from top of head to floor while wearing shoes. Record in feet and inches-e.g. 5'2" (a)
- Shoulder To Shoulder:* Give the measurements in inches across the back, from shoulder to shoulder. (b)
- Chest Size:* Take the measurement over largest portion of chest. Be sure tape is well up under the arms and over the shoulder blades. (c)
- Neck Size:* Take the measurement from center of neck wrapping tape all around the neck. Make sure the fit is comfortable. (d)
- Pants Length:* Men Only-Take the measurements from waist to floor with shoes on. (e)
- Hips Size:* Ladies Only-Take the measurements from hip to hip going in a full circle: (f)



Recorded Measurements

TURN IN THIS PORTION

Student Name: _____

Chest Size: _____

Bust (female only) _____

Waist: _____

Hip Size: _____

Pant Length: _____

Waist to Floor (female only) _____

Shoulder To Shoulder: _____

Shoulder to Wrist _____

Height: _____

Neck Size: _____